



MONTHLY MEMBERSHIP PROGRESS REPORT

District 322C1

Results as of: 05/31/2018

GMT: SWADESH RANJAN SAHA

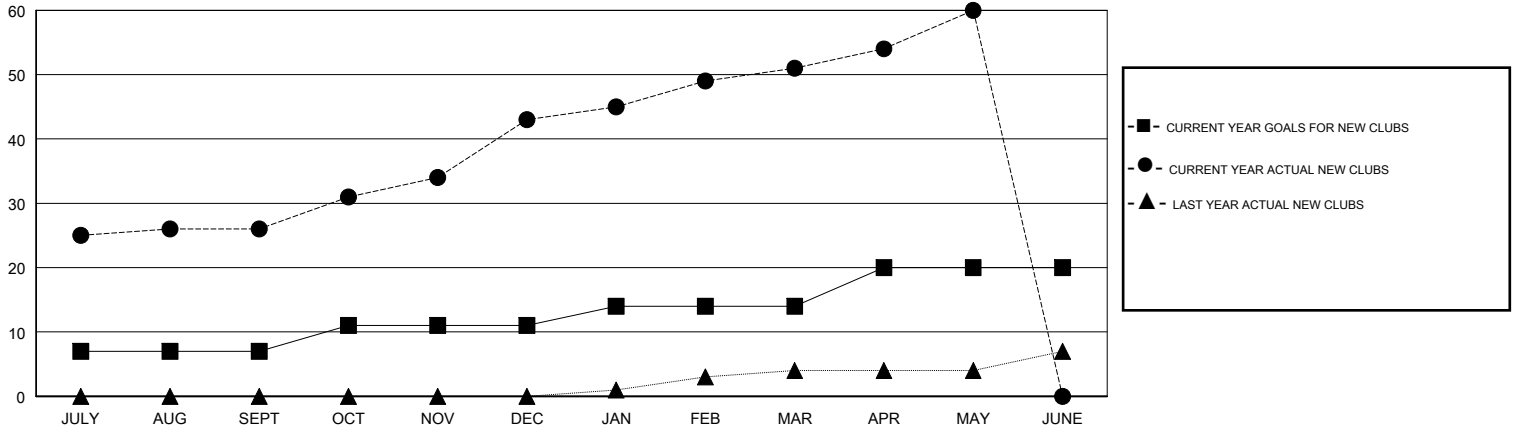
LOCATION INDIA

GMT CA

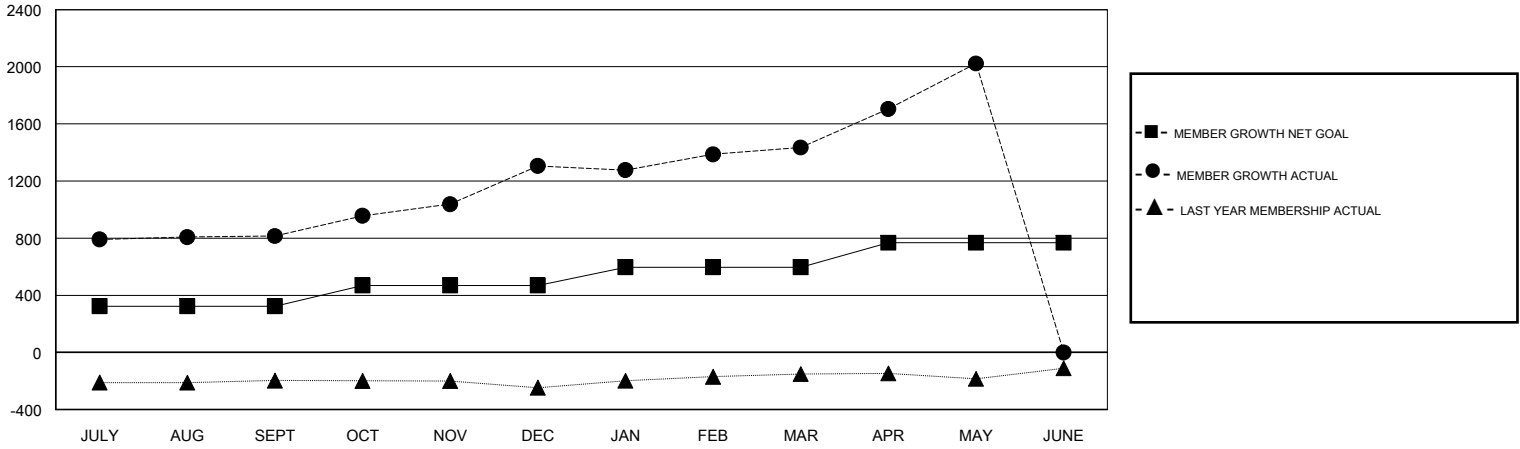
| Clubs | | | |
|-----------------------|---------------|-----------|---------------|
| RESULTS FOR 2017-2018 | | | |
| QUARTER | NEW CLUB GOAL | NEW CLUBS | DROPPED CLUBS |
| JULY/AUG/SEPT | 7 | 26 | 0 |
| OCT/NOV/DEC | 4 | 17 | 0 |
| JAN/FEB/MAR | 3 | 8 | 3 |
| APR/MAY/JUNE | 6 | 9 | 0 |

| Members | | | |
|-----------------------|------------------------|----------------------|--|
| RESULTS FOR 2017-2018 | | | |
| QUARTER | MEMBER GROWTH NET GOAL | MEMBER GROWTH ACTUAL | DROPPED MEMBERS ACTUAL (including transfers) |
| JULY/AUG/SEPT | 324 | 910 | 85 |
| OCT/NOV/DEC | 145 | 558 | 59 |
| JAN/FEB/MAR | 128 | 275 | 91 |
| APR/MAY/JUNE | 171 | 654 | 57 |

GOALS AND ACTUAL NEW CLUBS CUMULATIVE



GOALS AND ACTUAL MEMBERS CUMULATIVE



| | | | |
|------------------|--|--|----------------|
| DROPPED CLUBS: 3 | 138 CLUBS OF 160 ADDED 1 OR MORE NEW MEMBERS | <u>GENDER DISTRIBUTION</u> | |
| DROPPED MEMBERS | | MALE | 3,741 (72.47%) |
| DECEASED | 12 | FEMALE | 1,421 (27.53%) |
| CLUB CANCELLED | 57 | Women Percentage Fiscal Year Goal: 24% | |
| OTHER | 223 | TOTAL FAMILY UNIT MEMBERS | 2,798 |
| TOTAL | 292 | FAMILY MEMBERS PAYING HALF DUES | 1,609 |

[CLICK HERE FOR CUMULATIVE MEMBERSHIP DATA](#)